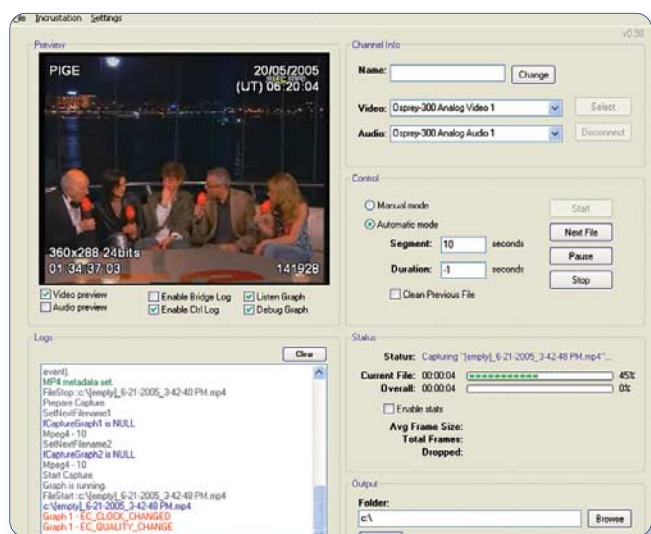


# Chronos

## Media Logging

**Chronos** is a solution developed by NETIA for the automatic 24/7 capture of audio and video feeds. **Chronos** also manages the viewing and archiving of recorded content.



VIEWING CAPTURE 24/7

### Digitizing / Recording

Chronos automatically captures audio and video feeds during broadcast and offers real-time MPEG 4 encoding for video and MP3 or WAV encoding for audio.

- ➔ Capture 24/7, self-acting and without any intervention or interruption.
- ➔ Encodes directly and automatically data after retrieval, in MPEG 4, MP3, or WAV format
- ➔ Inserts configurable video information (channel, date, time, etc.)

### Viewing

With Chronos you can view video data on demand. When retrieving the playlist, you can view the video without interrupting the recording. The server allows to view recorded events directly, while the client's part permits to several users to access simultaneously to recorded data on their workstations since a browser.

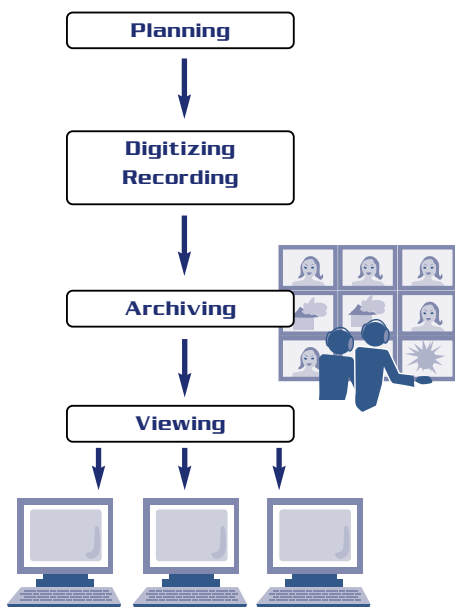
- ➔ View data being recorded without any disruption.
- ➔ Easy access due to the visualization from a standard Web browser.
- ➔ No need to update the client workstations.

### Archiving

Chronos archives and automatically purges recorded files stored either locally or on the network.

- ➔ Define the storage duration for each recorded channel.
- ➔ Segment recorded video and audio feeds in order to insert them in their corresponding section, based on predefined criteria for more efficient archive management.
- ➔ Significantly reduces storage requirements due to MPEG4 and MP3 compression.

## Chronos





# Chronos

## Media Logging



### Export

The **Chronos** archiving function is included in the client section of the viewing system. It allows to create your own folders in order to manage the database according to your company's specific classification system.

- Export different selected extracts.
- Manage export destinations.
- Burn selected files on DVD or CD-ROM directly from the **Chronos** application.

#### ***Minimum system configuration***

- Intel Pentium IV 2,8 Ghz or Xeon.
- Windows XP or 2003.
- Hard Disk 20 Go ou plus.
- RAM: 1 Go.
- Network board 100 Mo ou 1Go.
- Osprey video capture card (230 or 560).
- Display adapter.



[www.netia.com](http://www.netia.com)



> **NETIA - World Head Office**  
Tel +33 (0)4 67 59 08 07



> **NETIA Paris**  
Tel +33 (0)1 49 37 97 67



> **NETIA North America**  
Tel +1 888 207 2480